



## *Florida Department of Transportation*

RON DESANTIS  
GOVERNOR

2198 Edison Avenue  
Jacksonville, Florida 32204-2730

KEVIN J. THIBAUT, P.E.  
SECRETARY

### **For Immediate Release**

September 9, 2020

### **Contact: Bianca Speights**

(904) 360-5471

[Bianca.Speights@dot.state.fl.us](mailto:Bianca.Speights@dot.state.fl.us)

### **Drivers to See New Traffic Pattern in Northbound Lanes of U.S. 301 September 11**

**Jacksonville, Fla.** – As part of the Baldwin Bypass roadway improvement project, the northbound lanes of U.S. 301 from the I-10 overpass to Brandy Branch Road will be shifted into their final configuration Friday, September 11, weather and schedule permitting.

The I-10 westbound to U.S. 301 north exit ramp will be closed Friday, September 11 through Sunday, September 13 from 8 p.m. to 5:30 a.m. Traffic wishing to travel north on U.S. 301 will detour north on State Road 23 (Exit 350B), and travel west on U.S. 90 (Beaver Street) to travel northbound on U.S. 301 (map 2).

Lane closures will also be necessary on State Road 201 and the existing U.S. 301 tie-in at the north connection and U.S. 301 between U.S. 90 and the I-10 interchange on Friday, September 11 through Sunday, September 13 from 8 p.m. to 5:30 a.m.

Once traffic is shifted, drivers traveling north from the I-10 bridge will stop at the new signalized intersection at Brandy Branch Road and continue north to the old U.S. 301 lanes through the Town of Baldwin or continue north on the newly constructed State Road 201/Baldwin Bypass to existing U.S. 301. The new south connector of State Road 201/Baldwin Bypass will also be open to traffic (map 1).

The [Baldwin Bypass](#) construction project is scheduled to be completed in early 2021. Construction completion estimates are fluid and subject to change, weather and schedule permitting.

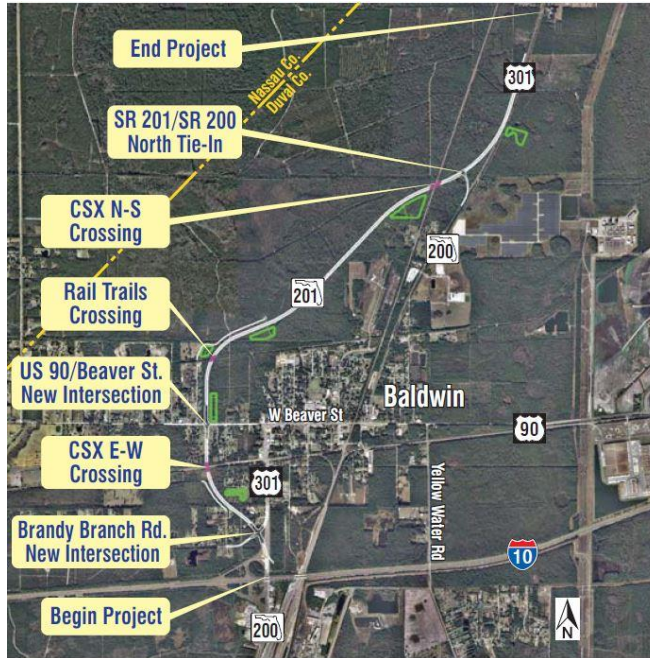


# Florida Department of Transportation

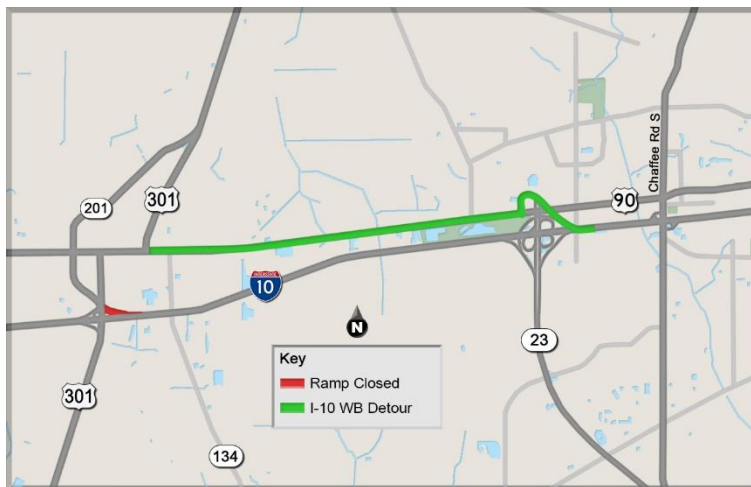
RON DESANTIS  
GOVERNOR

2198 Edison Avenue  
Jacksonville, Florida 32204-2730

KEVIN J. THIBAUT, P.E.  
SECRETARY



Map 1



Map 2

###